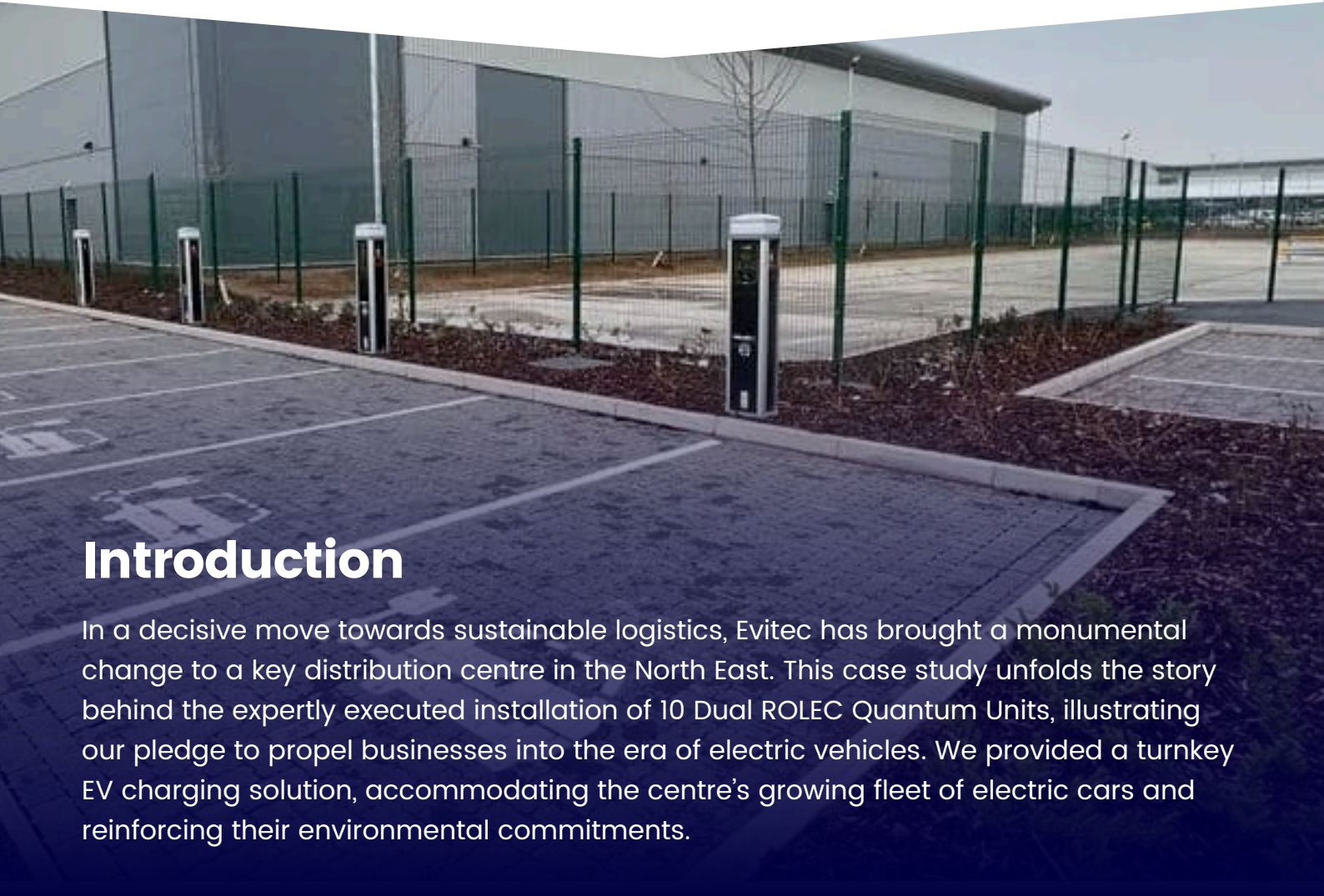


NORTH EAST CASE STUDY



Introduction

In a decisive move towards sustainable logistics, Evitec has brought a monumental change to a key distribution centre in the North East. This case study unfolds the story behind the expertly executed installation of 10 Dual ROLEC Quantum Units, illustrating our pledge to propel businesses into the era of electric vehicles. We provided a turnkey EV charging solution, accommodating the centre's growing fleet of electric cars and reinforcing their environmental commitments.

Project Overview

Evitec is proud to have completed the installation of 10 Dual ROLEC Quantum EV charging units at a leading distribution centre in the North East. These UK-manufactured, OCPP-compliant pedestals enhance the site's transition to electric mobility, offering a resilient and user-friendly charging resource for their expanding electric fleet. Our focused approach ensured a solution that supports the facility's functional needs and advances its sustainability agenda.



Objectives

- Deliver an advanced EV charging infrastructure that supports the centre's green initiatives.
- Provide a versatile charging experience with user-friendly features like app control and RFID charging.
- Enhance site safety and aesthetics with the robust design of the QUANTUM charging pedestals.



Why Rolec QUANTUM Pedestals?

Rolec QUANTUM pedestals were chosen for their exceptional blend of functionality, durability, and design. Key features that made them ideal for the project include:

- **Versatile Charging Options:** With 1x, 2x, or 4x universal charging sockets, they cater to a variety of needs and preferences.
- **High Charging Output:** Capable of up to 7.4kW or 22kW, they offer fast and efficient charging solutions.
- **Integrated RFID Readers:** Enhance user accessibility and security.
- **LED Amenity Lighting:** Increases visibility, enhancing safety and convenience.
- **Dynamic Load Balancing and Static Load Management:** Ensures optimal power distribution and efficient energy use.
- **Multiple Connectivity Options:** 4G, Wi-Fi, and Ethernet connectivity provide flexibility and ease of monitoring and control.

Execution

- **Planning and Assessment**

Conducted a detailed site evaluation to select prime locations for the QUANTUM pedestals, prioritising power access and user convenience.

- **Installation of Charging Pedestals**

Carefully placed Ropec QUANTUM pedestals to maximise utility and integrate seamlessly with the existing layout at the North East distribution centre.

- **Commissioning and Testing**

Ensured each unit met our rigorous standards for performance and safety, including testing all smart functionalities and load-balancing capabilities.

Results

- **Enhanced Charging Experience**

The deployment of QUANTUM pedestals at the North East centre has vastly improved the charging process, offering swift and user-friendly service.

- **Sustainability Impact**

These units bolster the centre's eco-initiatives by providing a greener substitute for traditional fuels, reducing the carbon footprint.

- **Aesthetic and Safety Enhancement**

QUANTUM's sleek design adds a modern touch to the facility, while integrated LED lighting heightens visibility and safety.

- **Future-Proof Infrastructure**

Equipped with advanced technology and OCPP compliance, these pedestals deliver a resilient infrastructure adaptable to future EV advancements.





Conclusion

The successful installation of Dual ROLEC Quantum EV charging units at the North East distribution centre exemplifies Evitec's dedication to advancing electric mobility. With this project, we've not only provided a highly functional EV charging solution but also ensured it meets the exacting standards of modern facility aesthetics and safety. This initiative is a testament to Evitec's ongoing commitment to innovation, environmental sustainability, and exceeding customer expectations.



e: sales@evitec.co.uk

t: 01709 288296

w: www.evitec.co.uk